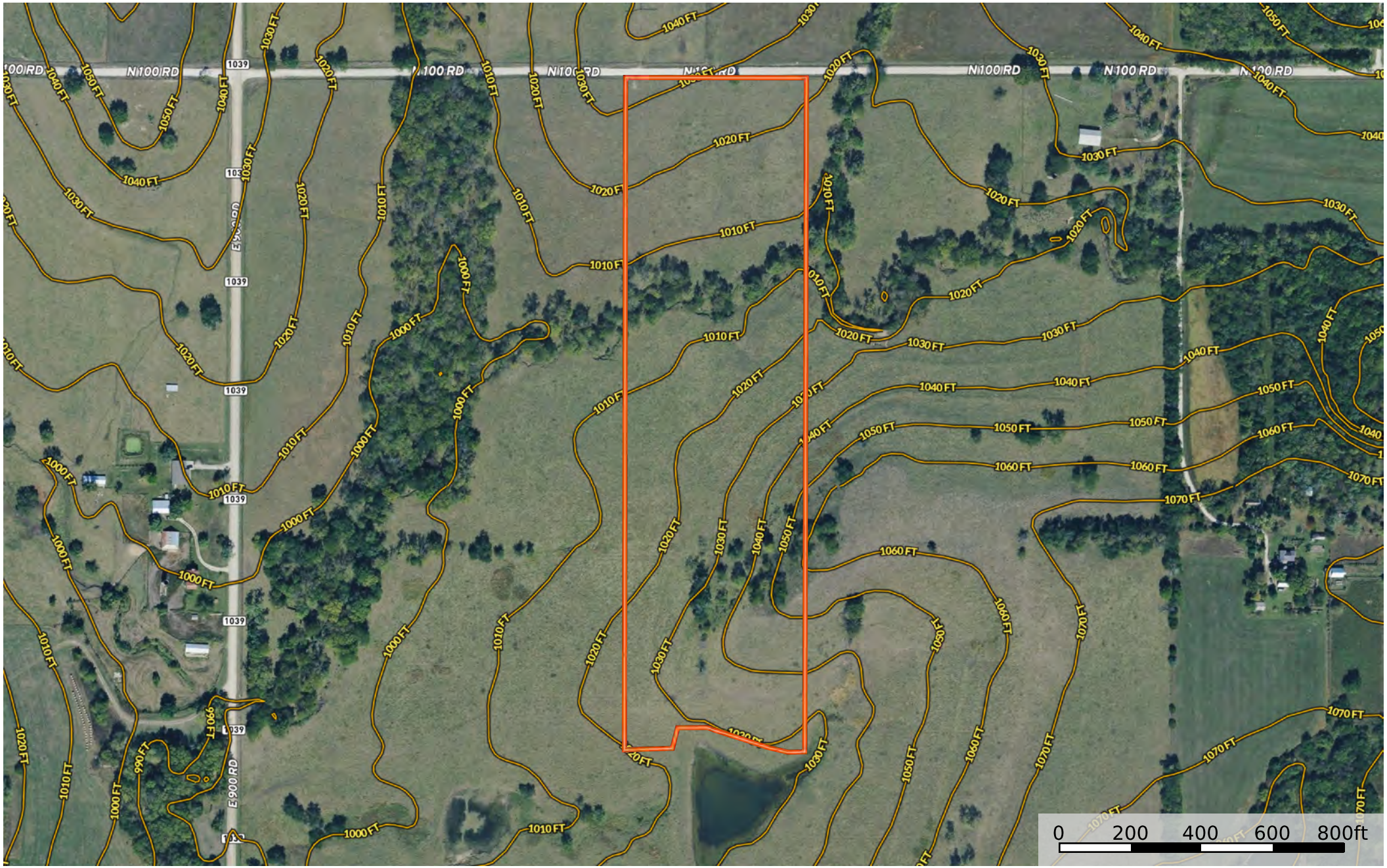


Willow Springs Reserve Parcel 3

Douglas County, Kansas, 22.8 AC +/-



Boundary

HECK diane@hecklandco.com

P: 785-917-5700 heck.realestate

3200 Haskell, Suite 130, Lawrence, KS 66046



The information contained herein was obtained from sources deemed to be reliable. Land id® Services makes no warranties or guarantees as to the completeness or accuracy thereof.