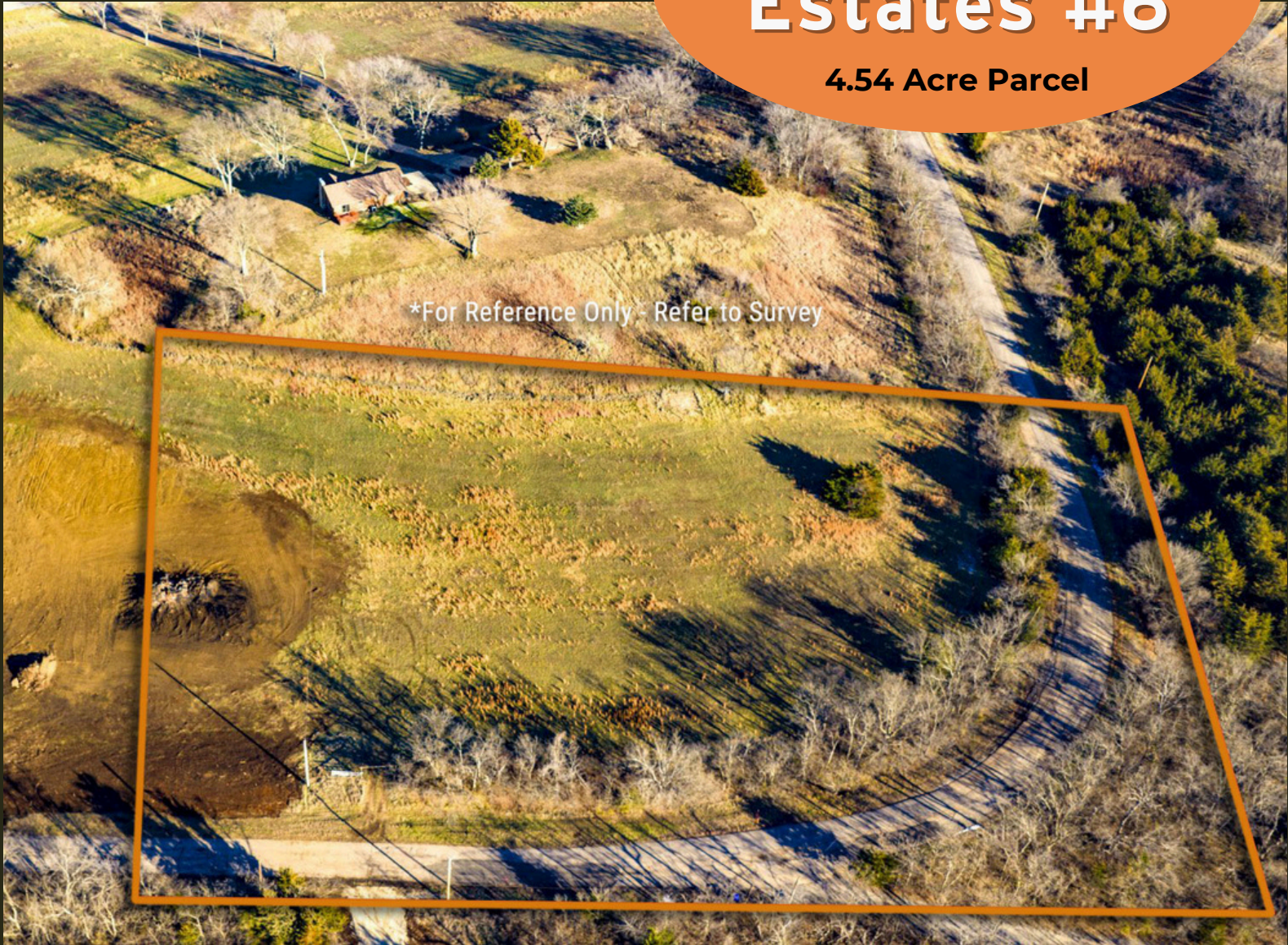




Horizon Ridge Estates #6

4.54 Acre Parcel



*For Reference Only - Refer to Survey



HORIZON RIDGE ESTATES #6



1200 SE Stanley Road, Tecumseh, Kansas

(non-legal address - for reference only)

COUNTY: Shawnee

SIZE: 4.54 Acres

Horizon Ridge Estates Tract 6 is a standout corner tract with 4.54 acres at SE 10th Street and Stanley Road, offering both presence and practical access. Elevated ground and sloping topography make this an ideal site for a walkout basement, lower-level patio, or terraced outdoor spaces that take advantage of the natural grade. A row of trees along the road adds privacy and a green buffer from this lightly traveled, hard-surfaced intersection. The corner position allows for potential driveway access from either SE 10th or Stanley, giving you flexibility for garage placement and traffic flow.

Located just off US Highway 40, you are minutes from Topeka, with quick access to I-70 and an easy drive toward Lawrence, yet the setting retains a peaceful, rural character near Tecumseh. Simple protective covenants are in place to maintain an attractive estate environment. With rural water meters and utilities available, Tract 6 is an exceptional opportunity for a signature home that really uses the land.



PRESENTED BY:

Dana Baker

HECK

913-244-3527 Mobile

Dana@heck.realestate

