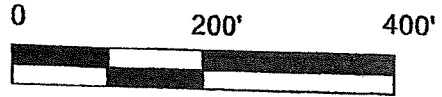


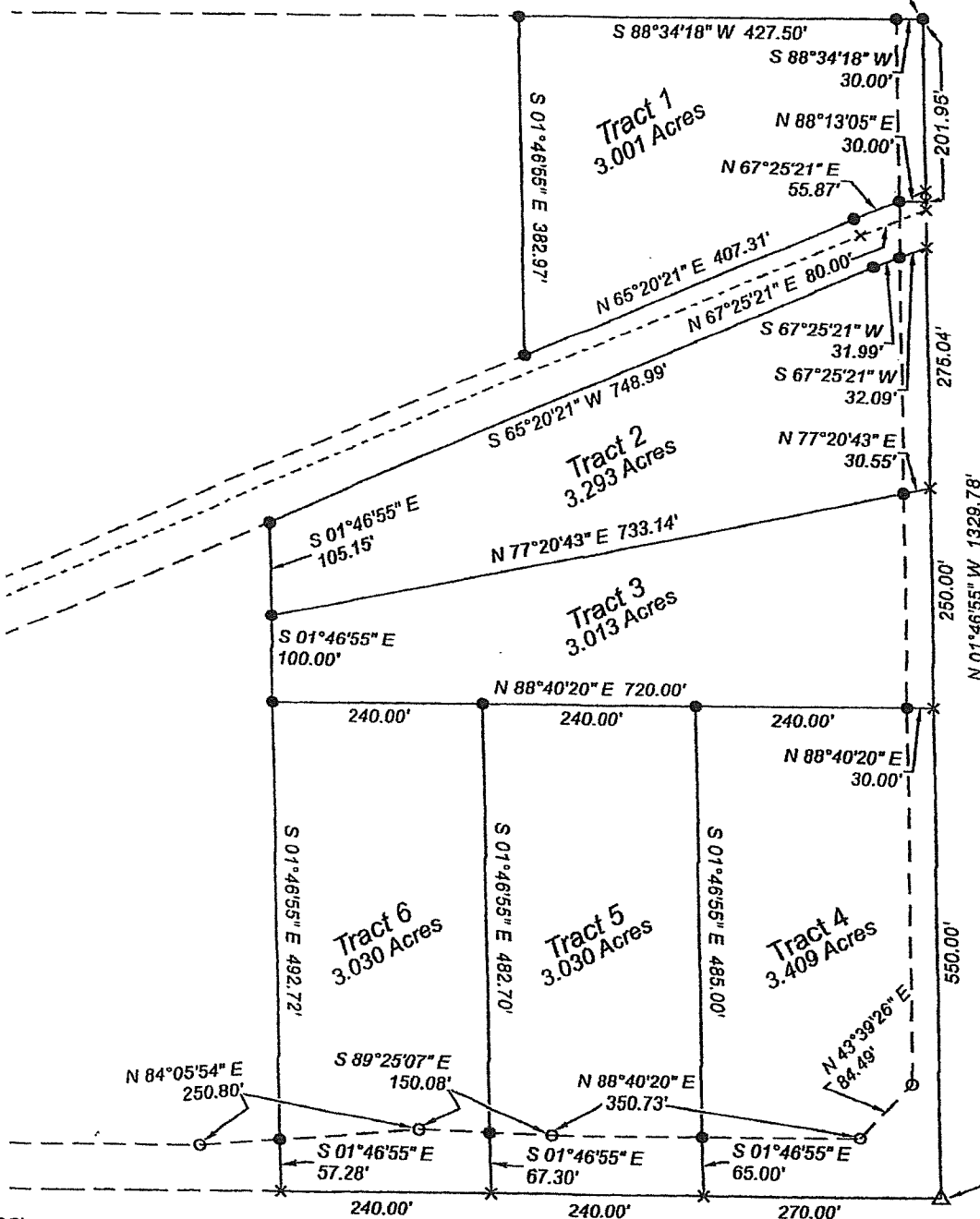




Steven L. Willett, P.S.  
18346 Hwy. K-16  
Holton, KS 66436-8476  
Office (785) 935-2581  
Cell (785) 224-4123



NE. Cor. of S. 1/2 of SE. 1/4 9-13-16  
Found small Mag nail (0.1' deep)  
Reset 30" long #5 Rebar Yellow Plastic I.D. cap  
stamped "STEVE WILLETT - KS PS 955"



REVIEWED IN ACCORDANCE WITH  
KSA CHAPTER 58, ARTICLE 20 BY  
THE SHAWNEE COUNTY SURVEYOR

PS# \_\_\_\_\_ DATE: \_\_\_\_\_

SE. Cor. 9-13-16  
Found #5 Rebar (0.2' deep)

**LAND SURVEYOR'S CERTIFICATION**

I, Steven L. Willett, P.S. #955, do hereby certify that this "Plat of Survey" shown hereon was completed on August 7th, 2021, under my direct field supervision. This plat is a true and correct exhibit of said field survey based on actual field measurements where the monuments are of the character and occupy the positions as indicated. This certification is void if accompanied by my original professional seal, which is signed and dated in blue ink; otherwise, it must be assumed to contain unauthorized alterations.



Steven L. Willett, Kansas P.S. #955

Date \_\_\_\_\_

