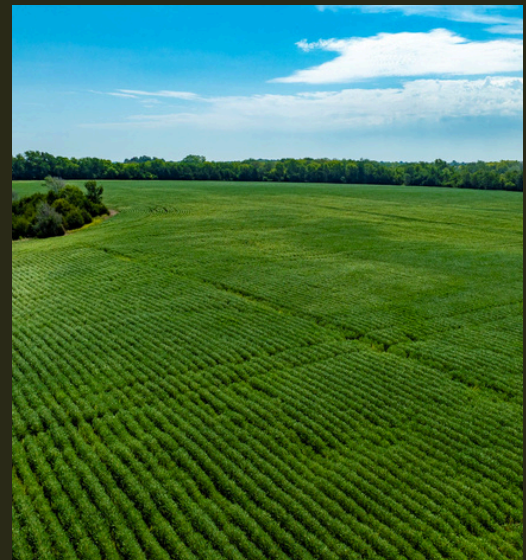
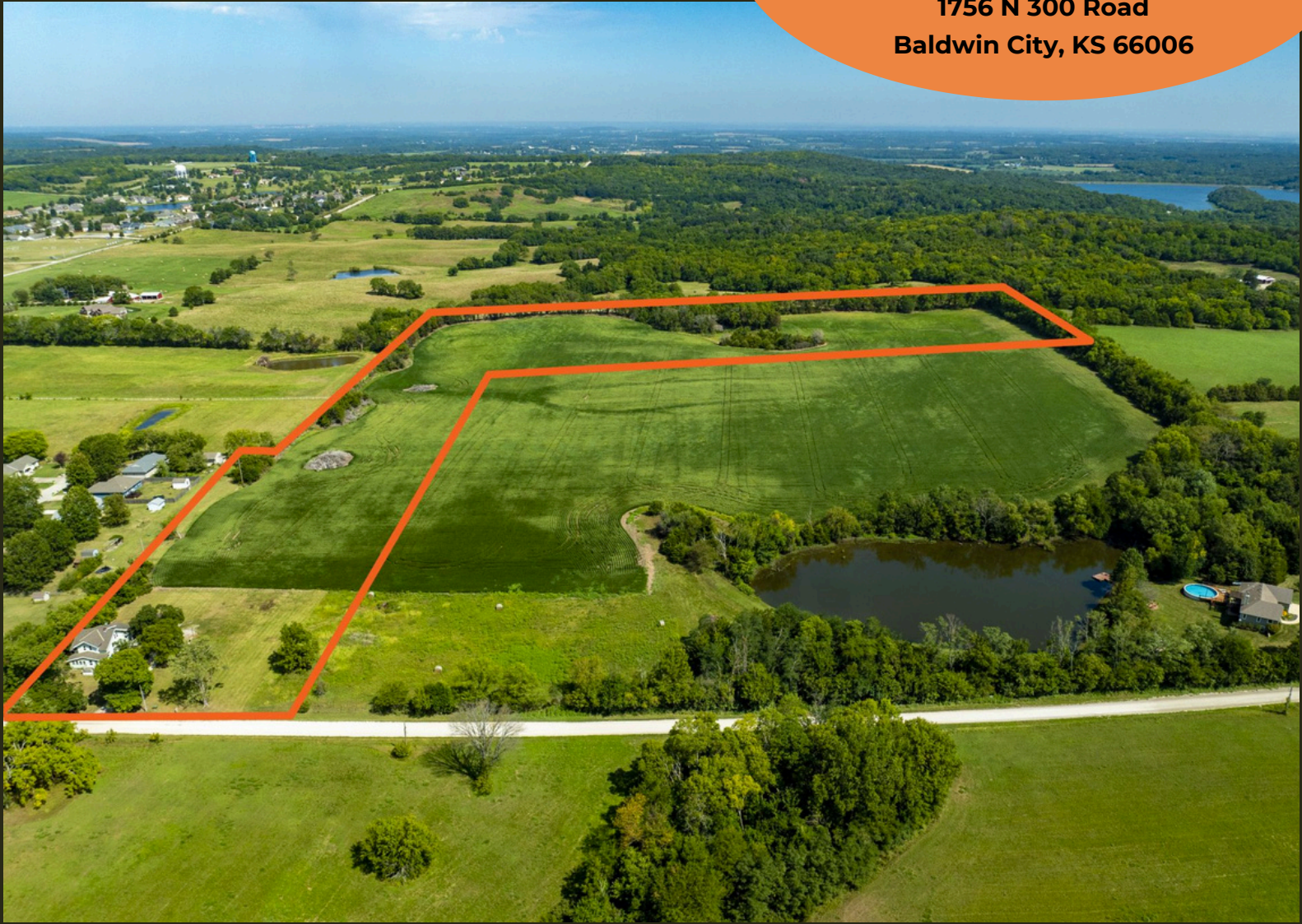




## Baldwin City Acres - Parcel 2

1756 N 300 Road  
Baldwin City, KS 66006





# BALDWIN CITY ACRES PARCEL 2



**1756 N 300 Road, Baldwin City, KS 66006**

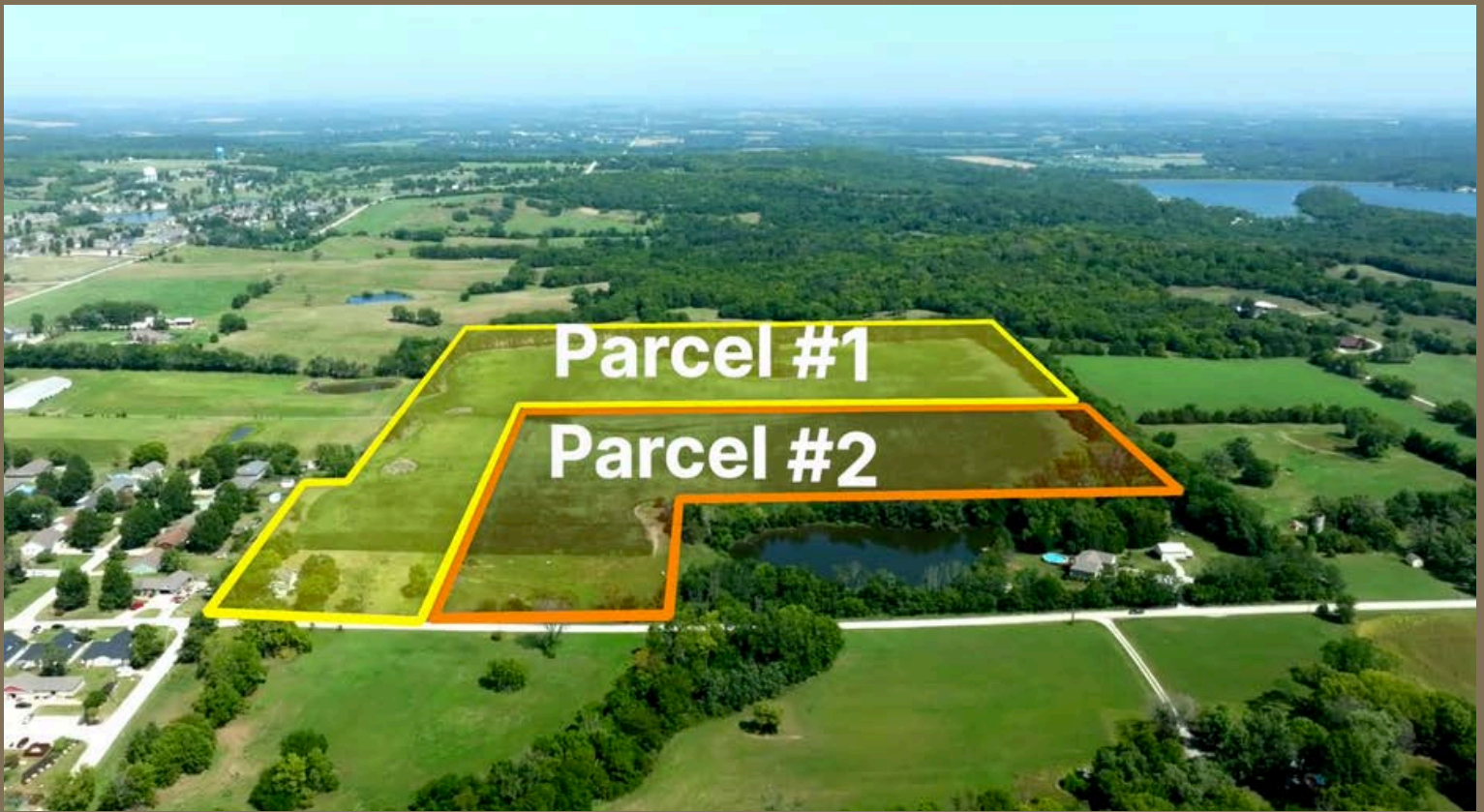
**COUNTY: Douglas**

**SIZE: 20 +/- Acres**

**ASKING PRICE: NOW \$295,000**

This beautiful 20-acre residential buildable parcel offers a serene and private setting just outside the Baldwin City limits. Currently used as farmland, it provides a blank slate for your vision—whether that's a custom-built home, hobby farm, or peaceful retreat. A border of mature trees surrounds the property, enhancing the sense of seclusion while still being just minutes from town. With less than 150 yards of gravel before reaching pavement, you'll have both country charm and modern convenience. Looking for more land? An adjacent 23 m/l acre parcel is also available. Take advantage of this rare opportunity to own your piece of rural paradise!

Contact Dana Baker at 913-244-3527 for more information or to schedule a showing.



PRESENTED BY:

**Dana Baker**

**HECK**

913-244-3527 Mobile

Dana@heck.realestate

