

HECK

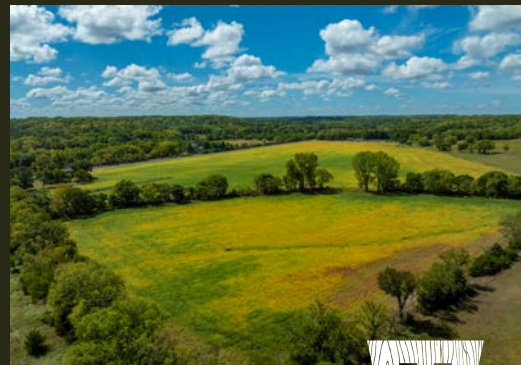
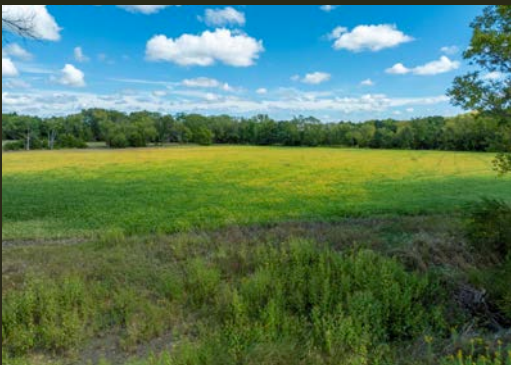
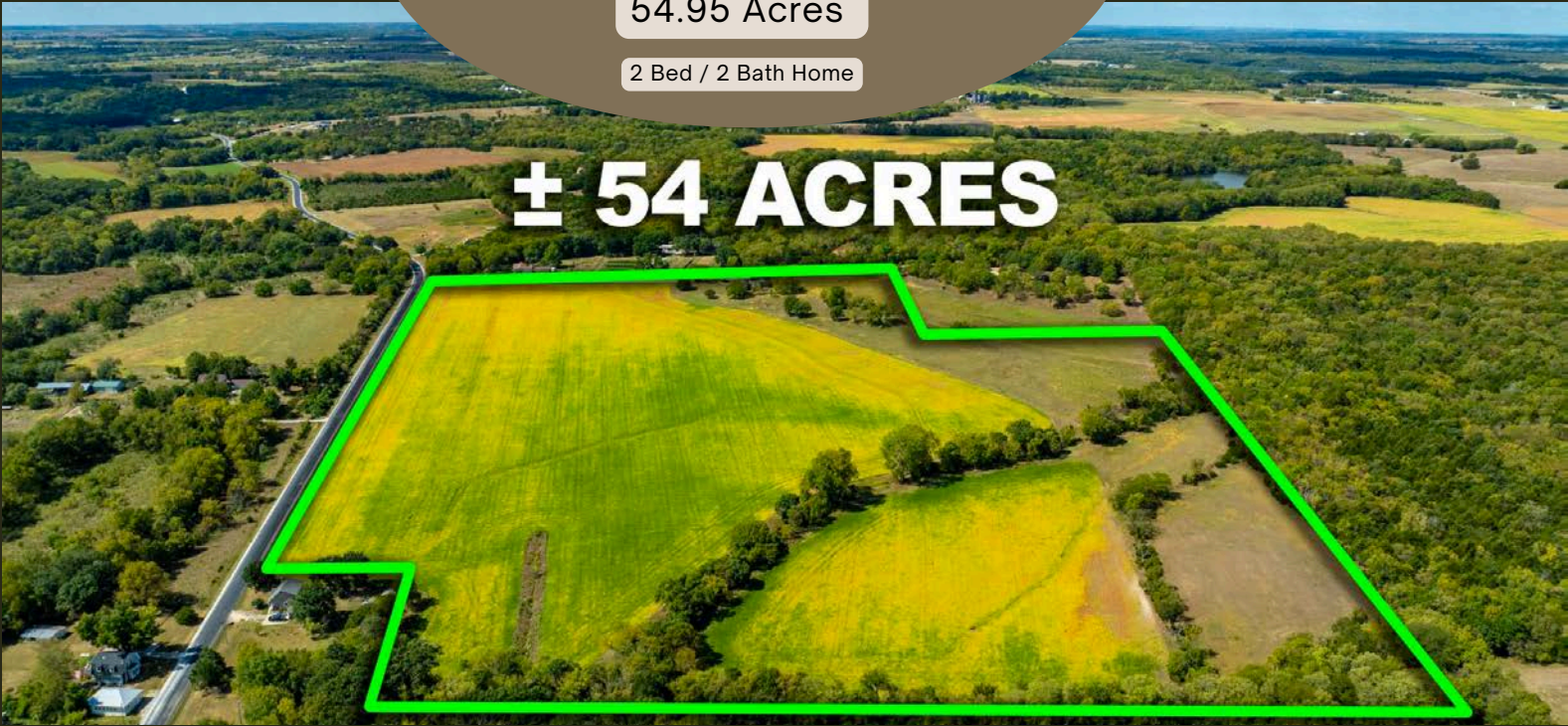
Starview Acres

878 E 750 Road, Lawrence, KS

54.95 Acres

2 Bed / 2 Bath Home

± 54 ACRES



Starview Acres

HECK

878 E 750 Road, Lawrence, KS 66047

COUNTY: Douglas | SIZE: 54.95 +/- Acres | ASKING PRICE: \$750,000



Discover Starview Acres -- an amazing 54-acre property! Seller will divide with acceptable offer into two 20+ acre parcels. One includes a home, the other is a prime build site. Live, build, or both! Located southwest of Lawrence, it boasts a hard-surfaced road on one side and gravel on another, offering easy access.

The land itself is a stunning combination of farm ground, grassland, trees, and a creek, providing a diverse landscape perfect for various uses. Enjoy beautiful views of the surrounding countryside, and take advantage of the nearby Lone Star Lake for boating, fishing, and outdoor recreation. This property may have the potential to be divided into smaller parcels, making it a versatile investment.

Included is a cozy 2-bedroom, 2-bathroom home with rural water. There's also a detached 2-car garage, perfect for extra storage or workshop space.

This 54-acre property is a rare find, combining privacy with proximity to recreational activities. Whether you're looking for a quiet getaway or a flexible investment, this land has much to offer..



HECK

