



Baldwin City Acres - Parcel 1

1752 N 300 Road
Baldwin City, KS 66006



BALDWIN CITY ACRES PARCEL 1



1752 N 300 Road, Baldwin City, KS 66006

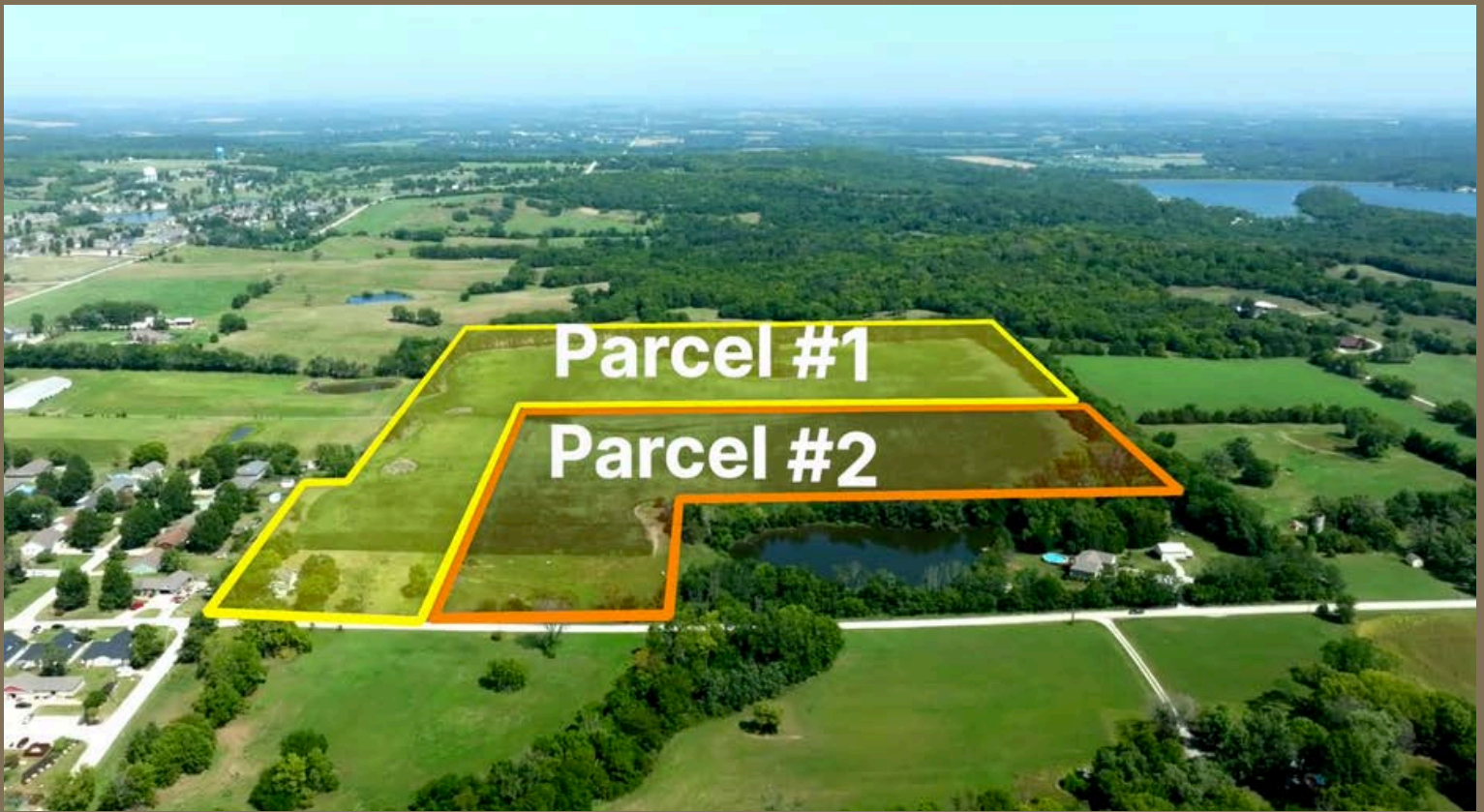
COUNTY: Douglas

SIZE: 23.44+/- Acres

ASKING PRICE: \$325,000

Discover the perfect blend of privacy and convenience with this stunning 23-acre m/l residential buildable parcel, located just outside the city limits of Baldwin City. Currently being farmed, this land offers a blank canvas to create your dream home. Mature trees line the perimeter, providing a natural privacy barrier, while the gently rolling terrain is ideal for a variety of home designs. With hard surfaced roads at the southwest corner of the property, you'll enjoy the best of country living with easy access to town. Looking for more land? An adjacent 20 m/l acre parcel is also available. Don't miss this rare opportunity to own a picturesque piece of land in a prime location!

Contact Dana Baker at 913-244-3527 for more information or to schedule a showing.



PRESENTED BY:

Dana Baker

HECK

913-244-3527 Mobile

Dana@heck.realestate

