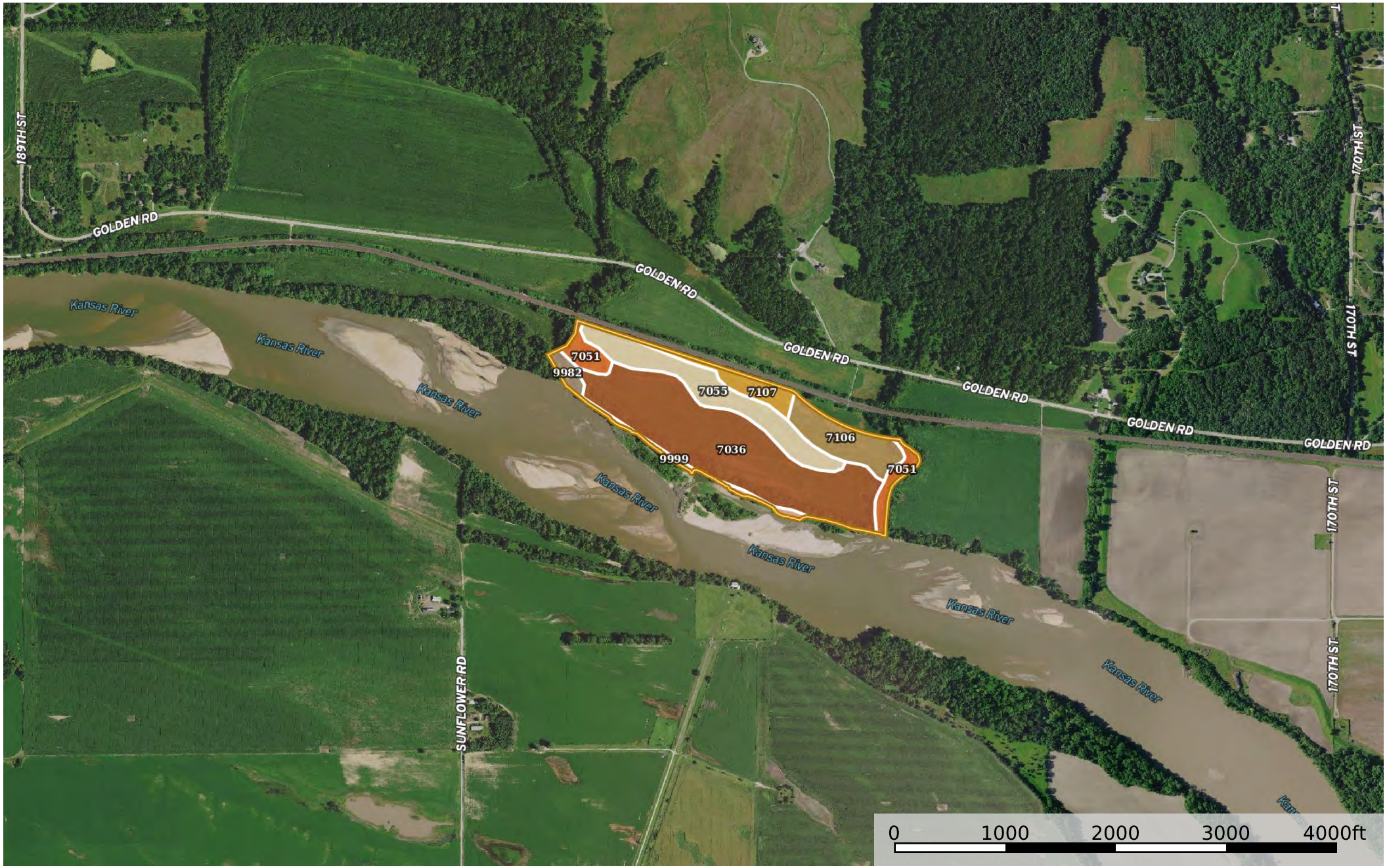


River Bottom Farm & Rec 5

Leavenworth County, Kansas, 65 AC +/-



 Boundary 3

|  Boundary 3 65.03 ac

SOIL CODE	SOIL DESCRIPTION	ACRES	%	CPI	NCCPI	CAP
7036	Eudora-Bismarckgrove silt loams, occasionally flooded	34.27	52.7	0	71	2w
7055	Kimo silty clay loam, occasionally flooded	12.35	18.99	0	72	2w
7106	Eudora-Bismarckgrove silt loams, rarely flooded	7.32	11.26	0	76	2w
7051	Kennebec silt loam, frequently flooded	4.58	7.04	0	76	2w
7107	Bismarckgrove-Kimo complex, rarely flooded	3.69	5.67	0	74	2w
9982	Fluvents, frequently flooded	1.41	2.17	0	-	6w
9999	Water	1.41	2.17	0	-	-
TOTALS		65.03(*)	100%	-	69.2	2.09

(*) Total acres may differ in the second decimal compared to the sum of each acreage soil. This is due to a round error because we only show the acres of each soil with two decimal.

