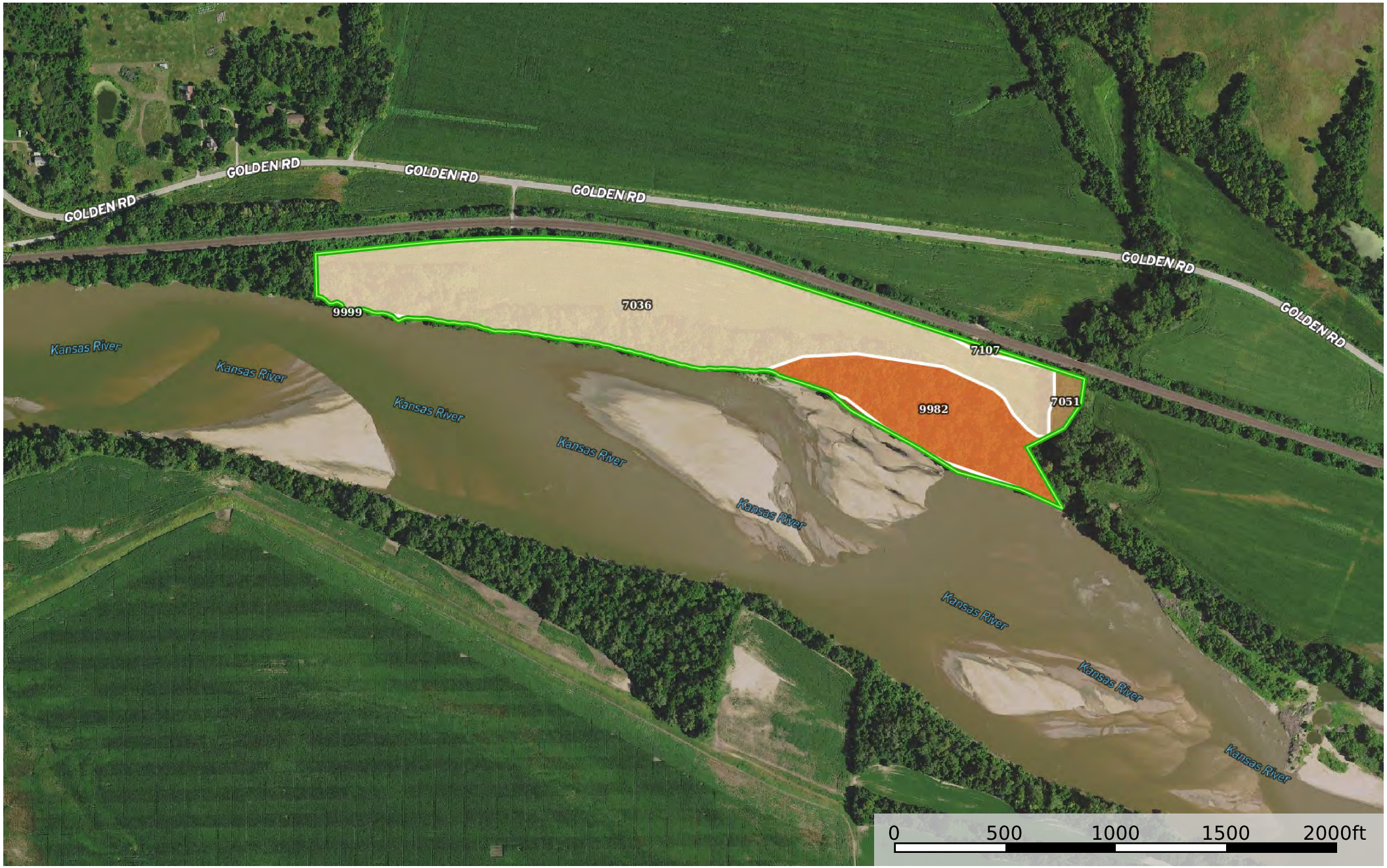


River Bottom Farm & Rec #4
Leavenworth County, Kansas, 35 AC +/-



 Boundary 5

Boundary 5 35.15 ac

SOIL CODE	SOIL DESCRIPTION	ACRES	%	CPI	NCCPI	CAP
7036	Eudora-Bismarckgrove silt loams, occasionally flooded	25.9	73.66	0	71	2w
9982	Fluvents, frequently flooded	8.05	22.9	0	-	6w
7051	Kennebec silt loam, frequently flooded	0.69	1.96	0	76	2w
9999	Water	0.31	0.88	0	-	-
7107	Bismarckgrove-Kimo complex, rarely flooded	0.2	0.57	0	74	2w
TOTALS		35.15(*)	100%	-	54.21	2.92

(*) Total acres may differ in the second decimal compared to the sum of each acreage soil. This is due to a round error because we only show the acres of each soil with two decimal.

